



Together we
eXcel
SMARTLY

AAKASH

(Abhiramshree)

2-3 BHK Flats & Offices

Before Shri Mruthyunjay Mandir
KOTHRUD

About Group

Deshpande Landmark Pvt. Ltd. is a well-established company dedicatedly working in construction and redevelopment sectors since 2005. Mr. Yogesh A. Deshpande - the founder director of Deshpande Landmark Pvt. Ltd, and is a genuine inspiration of Deshpande Landmark Pvt. Ltd. We, Deshpande Landmark Pvt. Ltd. have the mission to raise the customer's lifestyle by building elegant structures using high quality materials and offering best of amenities. We, Deshpande Landmark Pvt. Ltd., believe in delivering products that always exceed the buyer's expectations. We build intelligent and functionally superior products to promote Holistic Lifestyle to our customer.



100% COMMITMENT

We are committed to producing long-lasting relationships with our clients, and it helps us to repeat business for years.



GROWTH DRIVEN SYSTEM

We believe that collaboration, dedication and commitment establish a sense of trust and transparency.



HIGH QUALITY SERVICE

We have carved out a niche for high-quality outcomes in the civil contracting and construction industry.



CUSTOMER FOCUS

We continuously endeavour to surpass our customer's needs and expectations within budget and on time.

AAKASH

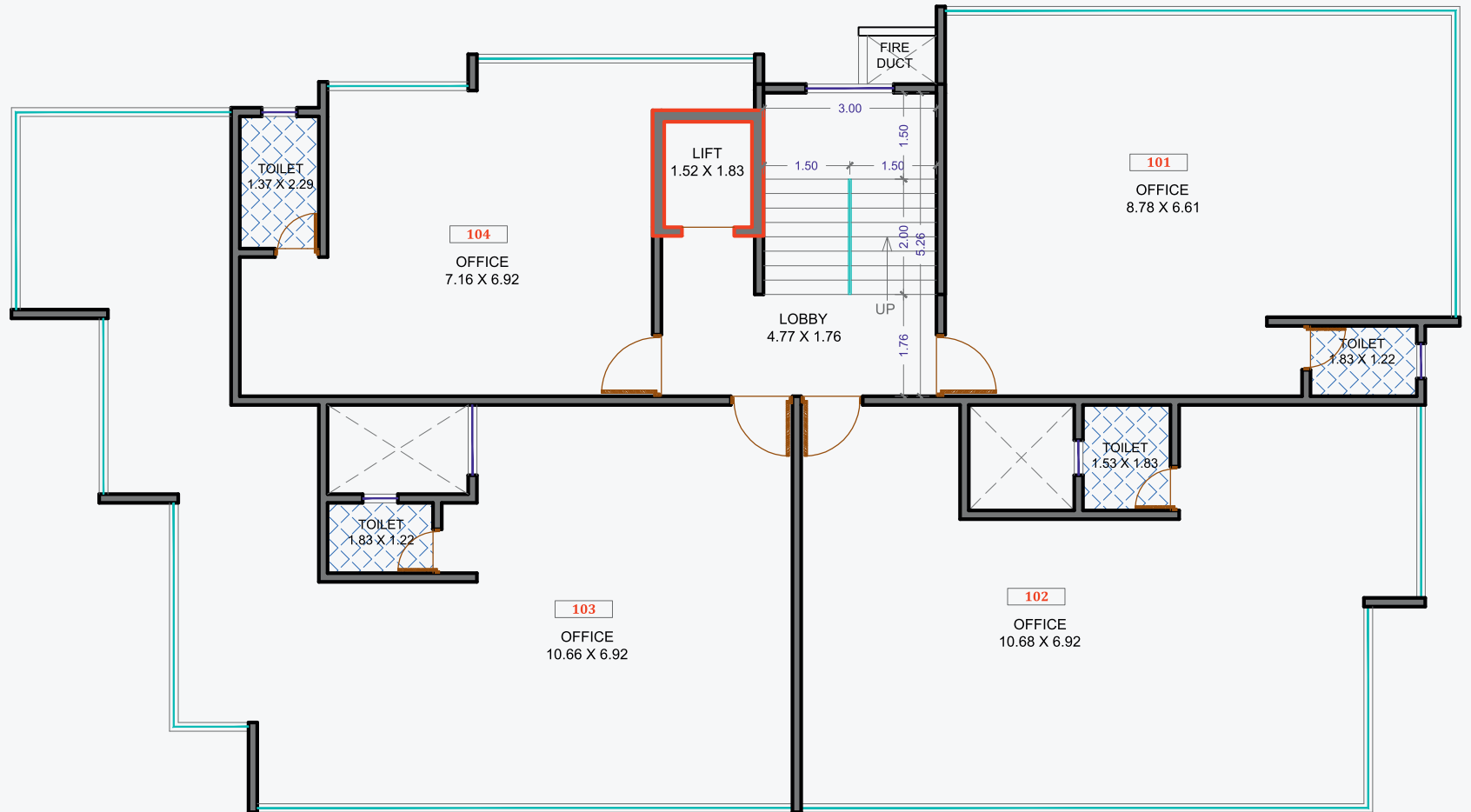
(Abhiramshree)



**#SMART
HOME**

Typical Floor Plan

1st FLOOR PLAN

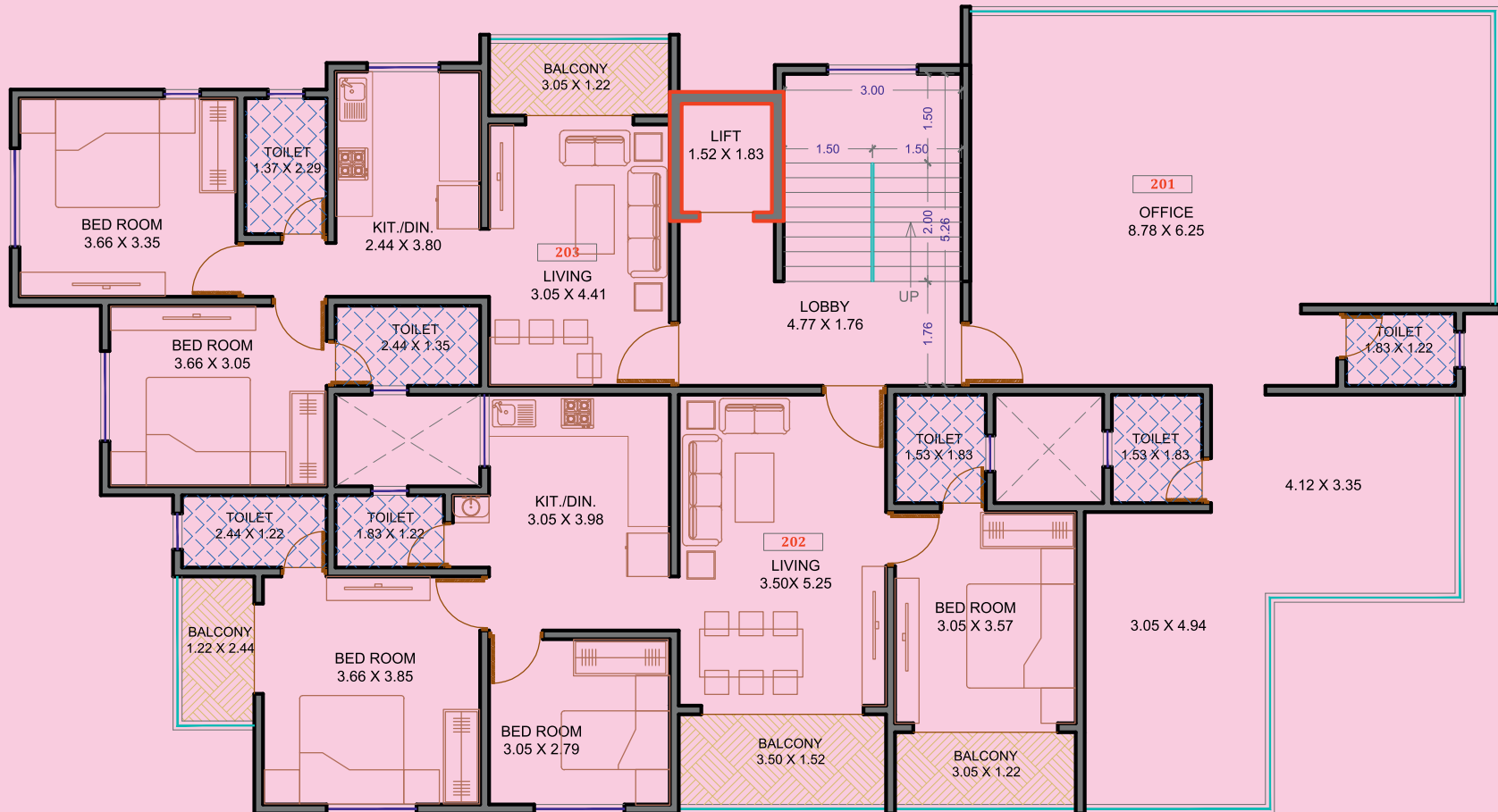


AREA CALCULATION :				
FLAT NO.	CARPET	TOTAL	NO.	TOTAL
101	618.00	618.00	1	618.00
102	730.00	730.00	1	730.00
103	900.00	900.00	1	900.00
104	430.00	430.00	1	430.00
				2,678.00 SQ.FT.
TOTAL SALEABLE OF FLOOR : 2,678.00 X 1 FL. = 2,678.00 SQ.FT.				



Typical Floor Plan

2nd FLOOR PLAN

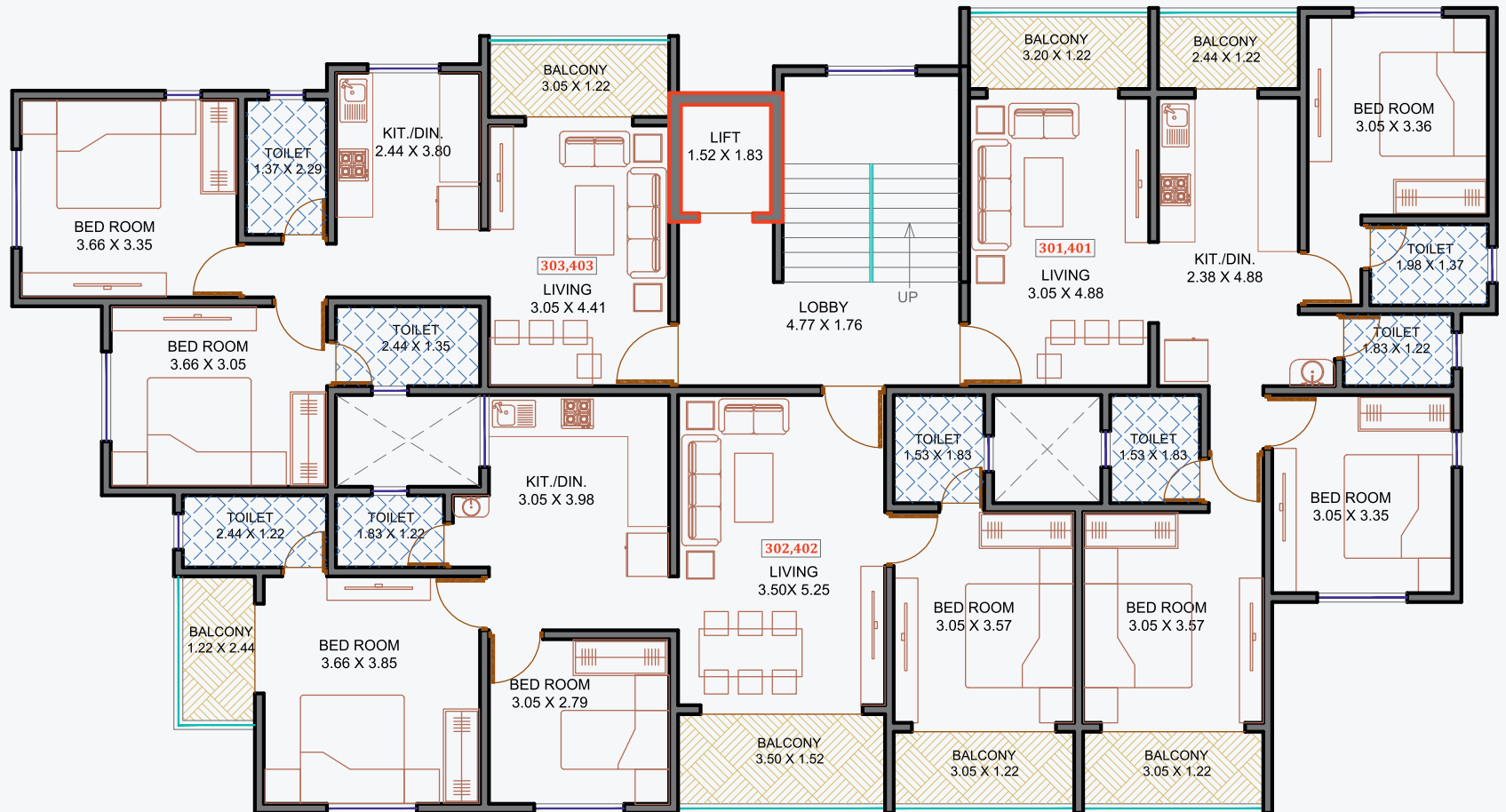


AREA CALCULATION :				
FLAT NO.	CARPET	TOTAL	NO.	TOTAL
201	925.00	925.00	1	925.00
202	977.00	977.00	1	977.00
203	660.00	660.00	1	660.00
				2,562.00 SQ.FT.
TOTAL SALEABLE OF FLOOR : 2,562.00 X 1 FL. = 2,562.00 SQ.FT.				



Typical Floor Plan

3rd & 4th FLOOR PLAN



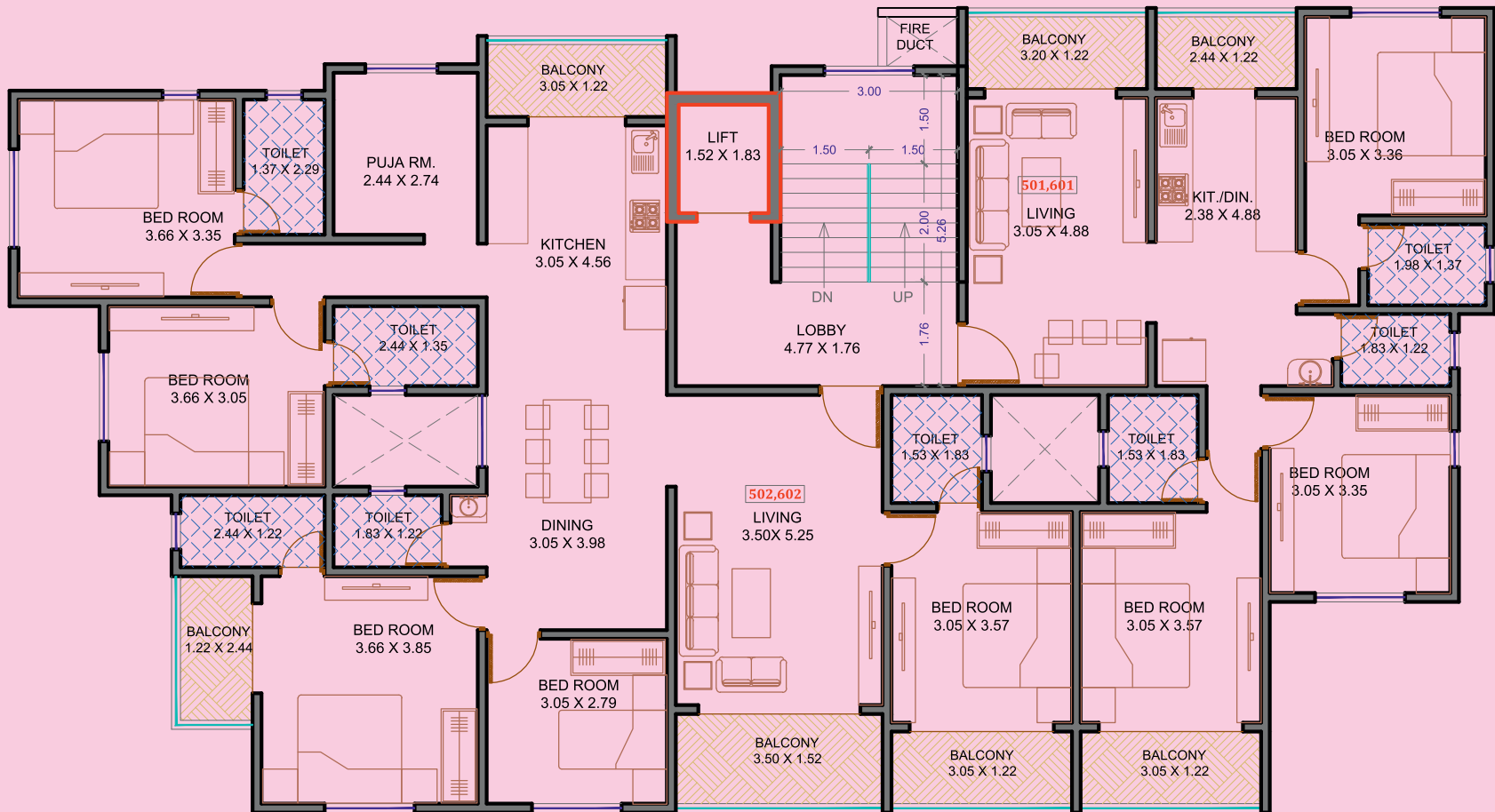
AREA CALCULATION :				
FLAT NO.	CARPET	TOTAL	NO.	TOTAL
301, 401	925.00	925.00	1	925.00
302, 402	977.00	977.00	1	977.00
303, 403	660.00	660.00	1	660.00
				2,562.00 SQ.FT.
TOTAL SALEABLE OF FLOOR : 2,562.00 X 2 FL. = 5,124.00 SQ.FT.				

NORTH



Typical Floor Plan

5th & 6th FLOOR PLAN



AREA CALCULATION :					NORTH
FLAT NO.	CARPET	TOTAL	NO.	TOTAL	
501, 601	925.00	925.00	1	925.00	
502, 602	1640.00	1640.00	1	1640.00	
				2,565.00 SQ.FT.	
TOTAL SALEABLE OF FLOOR : 2,565.00 X 2 FL. = 5,130.00 SQ.FT.					

- ONGOING PROJECTS -

- **WISHFUL 60 EXOTICA - SUS** ● **CHANDRA** - Mayur Colony
- **KOMAL** - Karve Nagar ● **VALLABH** - Senapati Bapat Road
- **ANJANEYA** - Dahanukar Colony, Kothrud ● **HARIPRASAD** - Patwardhan Baug
- **RAGHUVANSH** - Patwardhan Baug ● **SRINIWAS** - Mayur Colony
- **SATYA SAI** - Bajirao Road ● **SHANTADURGA** - Karve Road
- **SNEH & GOKULDHAM** - Kalewadi ● **JAYWANT PARK** - PCMC (Premlok Park)
- **INDIRA BUNGLOW** - Senapati Bapat Road

रिडेव्हलपमेंटमधील विश्वसनीय नाव



Deshpande Landmark Pvt. Ltd.

Promoters & Developers
Since 2005

'Jaydeep' Building, 5/3 Erandwane, Pune, Maharashtra 411004

☎ +91 82374 53365 / +91 82374 63365

✉ sales@deshpandelandmark.com 🌐 www.deshpandelandmark.com

📘 <https://www.facebook.com/deshpandelandmark>

📷 <https://www.instagram.com/deshpandelandmark>

ydblogs.com

Disclaimer: This brochure is conceptual and not a legal offering. The builder reserves the rights to delete or alter any details and/or make improvements as and when required. The images, layouts and maps in this brochure are for indicative purposes only.

Member

