

# ANJANEYA

1, 2 & 3 BHK flats

DAHANUKAR COLONY, PUNE

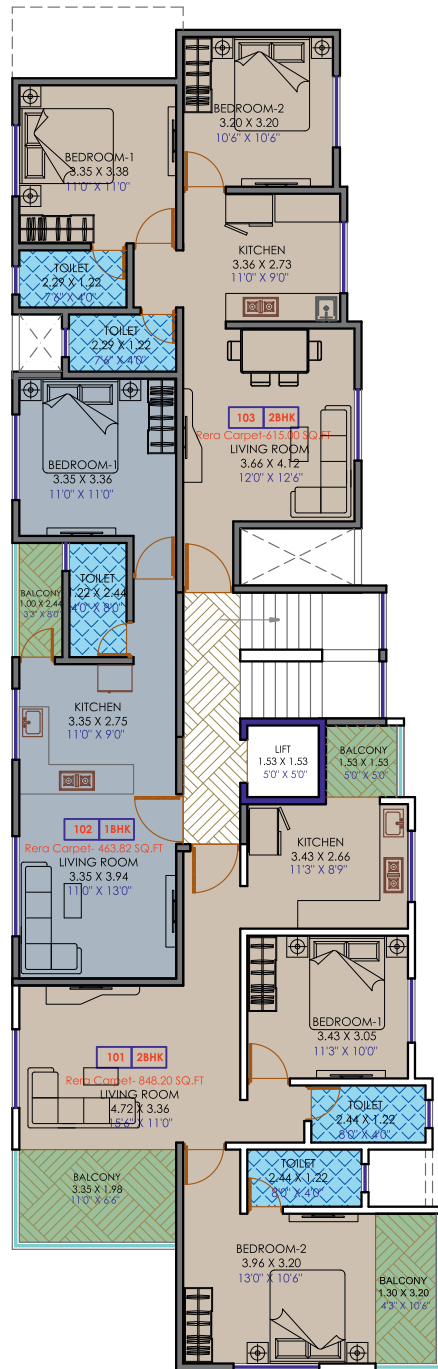
Together we  
**excel**  
SMARTLY



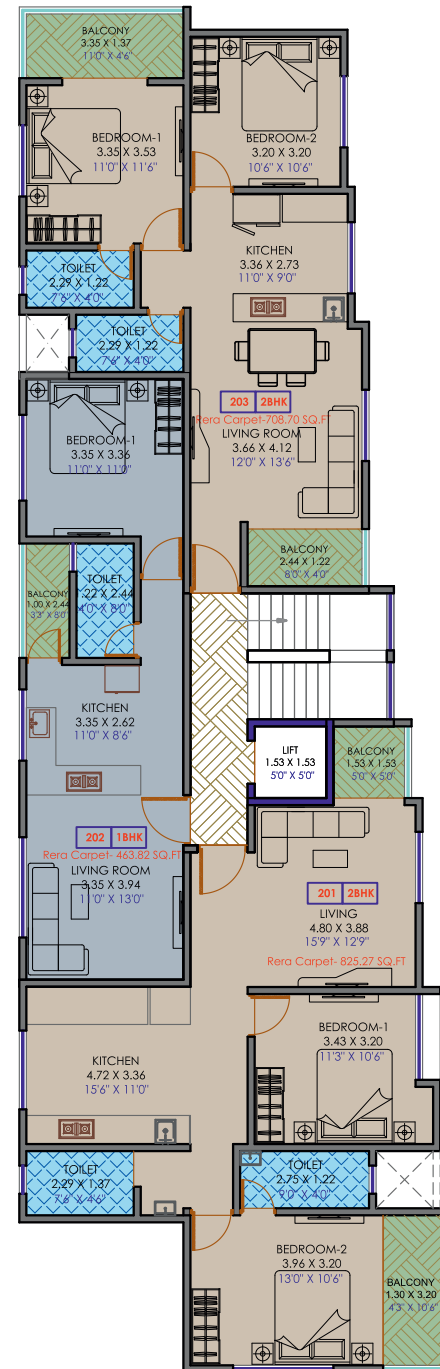
# Floor Plan

"ANJANEYA CO.OP.HSG.SOC."

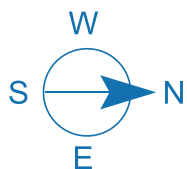
"ANJANEYA CO.OP.HSG.SOC."



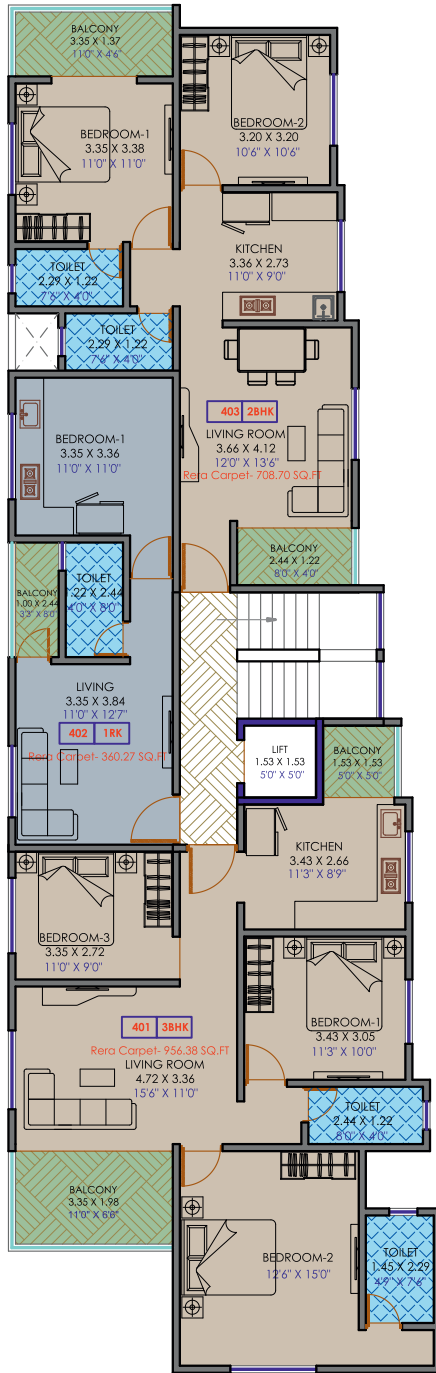
FIRST FLOOR PLAN



SECOND FLOOR PLAN



"ANJANEYA CO.OP.HSG.SOC."



TYPICAL FLOOR PLAN (Remaining Floors)

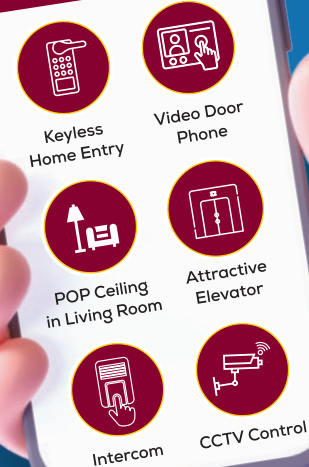
# Be Smart



#SMARTHOME



## SMART HOME AUTOMATION



Smart Home is the need of present era. We DLPL believe & give you the homes that are smart & futuristic. Our homes have all the amenities & facilities that stand with the time.

Owning a DLPL home is always a smart decision.



EXCELLENT LOCATIONS



100% COMMITMENT



HIGH QUALITY SERVICE



CUSTOMER FOCUS

Homes @ DLPL Anjaneya are designed to perfection with all the ready to use ultra modern amenities & facilities that will ensure maximum comfort

## - ONGOING PROJECTS -

- **ABHIRAMSHREE** - Karve Road | • **SHRINIWAS** - Mayur Colony
- **RAGHUVANSH** - Patwardhan Baug | • **HARIPRASAD** - Patwardhan Baug
- **CHANDRA** - Mayur Colony | • **KOMAL** - Karve Nagar
- **VALLABH** - Senapati Bapat Road | • **WISHFUL 60 EXOTICA** - Sus
- **GOKULDHAM & SNEHA SOCIETY** - Kalewadi | • **INDIRA BUNGLOW** - Senapati Bapat Road
- **SATYA SAI NILAYAM APARTMENT** - Sadashiv Peth

रिडेव्हलपमेंटमधील विश्वसनीय नाव



**Deshpande Landmark Pvt. Ltd.**

Promoters & Developers

Since 2005

'Jaydeep' Building, 5/3 Erandwane, Pune, Maharashtra 411004

+91 82374 53365 / +91 82374 63365

sales@deshpandelandmark.com www.deshpandelandmark.com

<https://www.facebook.com/deshpandelandmark>

<https://www.instagram.com/deshpandelandmark>

ydblogs.com



**MAHARERA NO: P52100077569**



Scan for  
MaharERA Details

Disclaimer: This brochure is conceptual and not a legal offering. The builder reserves the rights to delete or alter any details and/or make improvements as and when required. The images, layouts and maps in this brochure are for indicative purposes only.

