

Together we
excel
SMARTLY

Wishful
60 
exotica
1 & 2 BHK
Flats



Project by
**DESHPANDE
WAIKAR LANDMARK**

About Group

Deshpande Landmark Pvt. Ltd. is a well-established company dedicatedly working in construction and redevelopment sectors since 2005. Mr. Yogesh A. Deshpande - the founder director of Deshpande Landmark Pvt. Ltd, and is a genuine inspiration of Deshpande Landmark Pvt. Ltd. We, Deshpande Landmark Pvt. Ltd. have the mission to raise the customer's lifestyle by building elegant structures using high quality materials and offering best of amenities. We, Deshpande Landmark Pvt. Ltd., believe in delivering products that always exceed the buyer's expectations. We build intelligent and functionally superior products to promote Holistic Lifestyle to our customer.



100% COMMITMENT

We are committed to producing long-lasting relationships with our clients, and it helps us to repeat business for years.



GROWTH DRIVEN SYSTEM

We believe that collaboration, dedication and commitment establish a sense of trust and transparency.



HIGH QUALITY SERVICE

We have carved out a niche for high-quality outcomes in the civil contracting and construction industry.



CUSTOMER FOCUS

We continuously endeavour to surpass our customer's needs and expectations within budget and on time.



1 & 2 BHK
Flats





#SMARTHOME



60+
Amenities

ROOFTOP AMENITIES

This is a reference layout with facilities.
This may change as per availability of space.



Smart Home



Keyless Home Entry



Remote Door Locks



Smart Permissions



Smart Lighting



Safety Sensors



Fan Controls



Smart Switches



Door Windows Sensor



Living Room LED Lights



POP Ceiling in Living Room



Designer Bathroom Fitting



Water Purifier



Trending Tile Work



Attractive Elevator



Vaastu Compliant



Siren



Gas Leakage Sensor



Fire Detection Sensor



Curtain Controlled



Gas Value



Water Value



CCTV Control



Ac control or any device which work on IR



Intercom



Video Door Phone Arrangement

Smart Energy



Solar Water Heater System



Vehicle Charging Point



Inverter with Battery



Solar Lighting at walkway



Common Lighting Power Backup



Power Backup Lift



Power Backup Water Pump



Power Backup for Common Areas



Solar Connection in Master Bedroom

Serene Courtyard



Keyless Home Entry



Entrance Plaza



Lotus Pond



Children's Play Zone



Senior Citizens Zone



Entrance Lobby



Reading Zone



Roof-Top Terraces



Pet-Friendly



Barbeque Spot



Bike & Cycle Parking



Garden Benches



Rain Water Harvesting



Covered Parking



GYM at Terrace

Secured Premises



24 x 7 Security



Fire Pits



24 x 7 CCTV Cameras



Fire Fighting System



Controlled Access



Visitors Parking



Sanitization & Temperature Check



Admin Office



Building as per Safety Norms



Garbage Chute



Decorative Entrance



Passenger Lift and Stretcher Lift with Camera



Security Cabin

Strong Fitness



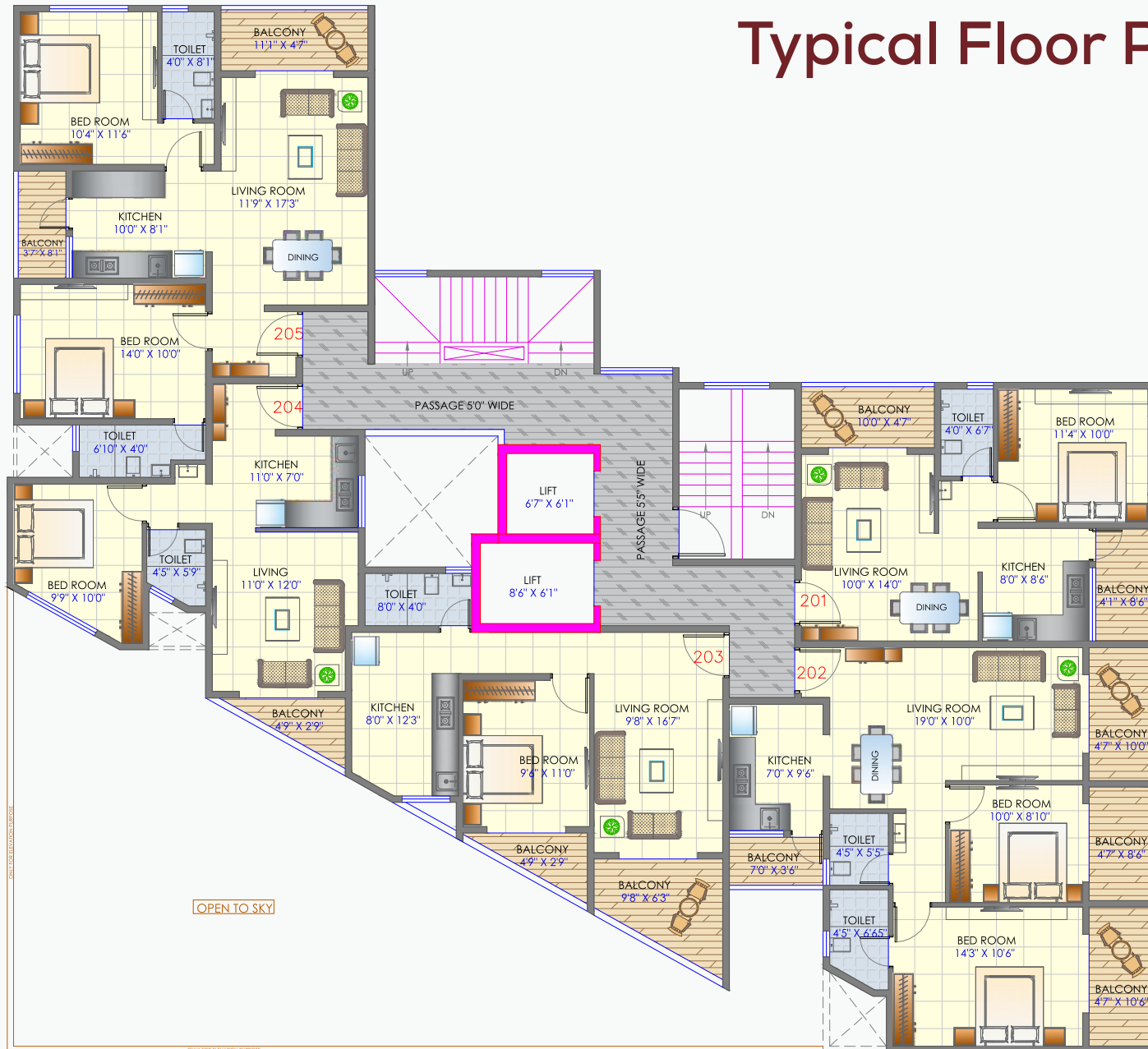
Yoga with Meditation Area



Outdoor Fitness Zone

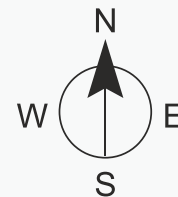
The above Amenities are subject to plan provision & space availability. T & C apply.

Typical Floor Plan



AREA STATEMENT

TYPICAL FLAT	FLAT TYPE	RERA CARPET	SALEABLE AREA
101	1 BHK	499.23 sq.ft	673.96 sq.ft
102	2 BHK	813.22 sq.ft	1097.85 sq.ft
103	1 BHK	541.00 sq.ft	730.35 sq.ft
104	1 BHK	409.35 sq.ft	552.62 sq.ft
105	2 BHK	776.30 sq.ft	1048.01 sq.ft



Location



ONGOING PROJECTS

- **WISHFUL 60 EXOTICA - SUS** • **CHANDRA** - Mayur Colony
- **KOMAL** - Karve Nagar • **VALLABH** - Senapati Bapat Rd.
- **ANJANEYA** - Dahanukar Colony, Kothrud • **HARIPRASAD** - Patwardhan Baug

रिडेव्हलपमेंटमधील विश्वसनीय नाव



Deshpande Landmark Pvt. Ltd.

Promoters & Developers

Since 2005

'Jaydeep' Building, 5/3 Erandwane, Pune, Maharashtra 411004

+91 82374 53365 / +91 82629 79432

✉ sales@deshpandelandmark.com 🌐 www.deshpandelandmark.com

📘 <https://www.facebook.com/deshpandelandmark>

📷 <https://www.instagram.com/deshpandelandmark>

ydblogs.com



MAHARERA NO: P52100035104

Disclaimer: This brochure is conceptual and not a legal offering. The builder reserves the rights to delete or alter any details and/or make improvements as and when required. The images, layouts and maps in this brochure are for indicative purposes only.

Member

