

# Forever Pleasure



**KOMAL**

2 & 3 BHK FLATS

KARVE NAGAR PUNE

## About Group

Deshpande Landmark Pvt. Ltd. is a well-established company dedicatedly working in construction and redevelopment sectors since 2005. Mr. Yogesh A. Deshpande - the founder director of Deshpande Landmark Pvt. Ltd, and is a genuine inspiration of Deshpande Landmark Pvt. Ltd. We, Deshpande Landmark Pvt. Ltd. have the mission to raise the customer's lifestyle by building elegant structures using high quality materials and offering best of amenities. We, Deshpande Landmark Pvt. Ltd., believe in delivering products that always exceed the buyer's expectations. We build intelligent and functionally superior products to promote Holistic Lifestyle to our customer.



### 100% COMMITMENT

We are committed to producing long-lasting relationships with our clients, and it helps us to repeat business for years.



### GROWTH DRIVEN SYSTEM

We believe that collaboration, dedication and commitment establish a sense of trust and transparency.



### HIGH QUALITY SERVICE

We have carved out a niche for high-quality outcomes in the civil contracting and construction industry.



### CUSTOMER FOCUS

We continuously endeavour to surpass our customer's needs and expectations within budget and on time.



# KOMAL

2 & 3 BHK FLATS

KARVE NAGAR PUNE

2 & 3 BHK flats at Komal assure the best smart home amenities and facilities. The biggest advantage of this scheme is the location of Karve Nagar, which has the best connectivity and all day-to-day requirement provisions within the reach. Karve Nagar is one of the most in-demand area and owning a home at Komal is a dream becoming reality.

**52+**  
Amenities

# #SMARTHOME



## Smart Home Automation



Keyless Home Entry



Remote Door Locks



Smart Permissions



Smart Lighting



Safety Sensors



Smart Switches



Living Room LED Lights



POP Ceiling in Living Room



Designer Bathroom Fitting



Water Purifier



Curtain Controlled



Trending Tile Work



Vaastu Compliant



Gas Leakage Sensor



Fire Detection Sensor



Attractive Elevator



Siren



CCTV Control



Intercom



AC Control-IR



Video Door Phone

## Secured Premises



Security Cabin



Fire Pits



24X7 CCTV Camera



Controlled Access



Decorative Entrance



Visitors' Parking



Passenger Lift



Admin Office



Building as Per Safety Norms



24 X 7 Security

## Serene Courtyard



Serene Landscape



Entrance Plaza



Children's Play Zone



Entrance Lobby



Pet-Friendly



Roof-Top Terraces



Garden Benches



Rain Water Harvesting



Recreational Open Space at Terrace



Mechanical Parking



Bike & Cycle Parking

## Strong Fitness



Yoga with Meditation Area



GYM at Terrace

## Smart Energy



Solar Water Heater System



Vehicle Charging Point



Inverter with Battery



Solar Lighting at Walkway



Power Backup Lift



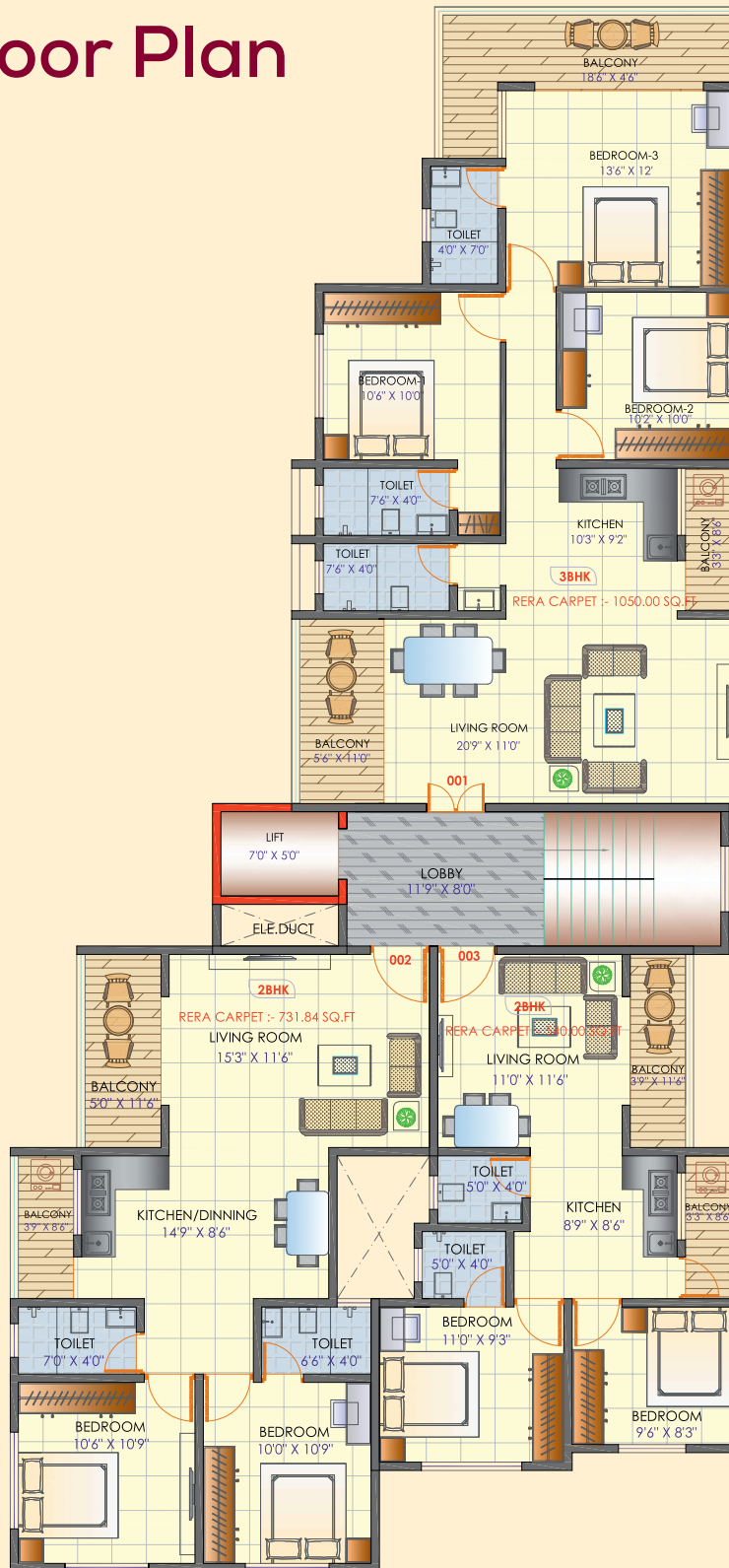
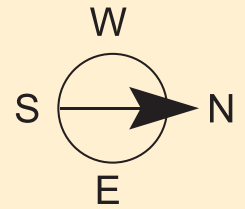
Power Backup Water Pump



Power Backup For Common areas

The above Amenities are subject to plan provision & space availability. T & C apply.

# Floor Plan



AREA STATEMENT			
TYPICAL FLAT	FLAT TYPE	RERA CARPET	SALEABLE
001	3 BHK	1050.00 sq.ft	1417.50 sq.ft
002	2 BHK	731.00 sq.ft	986.85 sq.ft
003	2 BHK	540.00 sq.ft	729.00 sq.ft

# Location



KOMAL

Shani Mandir

Vitthal Temple

Matoshree  
Vrusdhaashram

Sadhana Darshan  
Astrology Centre

Sahyli Shelters

Commins College Road

DP Road

Rajaram Bridge

DP Road

Mutha River

Venkateshwara  
Group of Companies

Rajaram Bridge

Sinhgad Road

Mutha River

## ONGOING PROJECTS

- W60 EXOTICA - SUS • CHANDRA - Mayur Colony
- KOMAL - Karve Nagar • VALLABH - Senapati Bapat Rd.
- ANJANEYA - Dahanukar Colony, Kothrud • HARIPRASAD - Patwardhan Baug



**Deshpande Landmark Pvt. Ltd.**

Promoters & Developers

Since 2005

'Jaydeep' Building, 5/3 Erandwane, Pune, Maharashtra 411004

☎ +91 82374 53365 / +91 82629 79432

✉ sales@deshpandelandmark.com 🌐 www.deshpandelandmark.com

📘 <https://www.facebook.com/deshpandelandmark>

📷 <https://www.instagram.com/deshpandelandmark>

[ydblogs.com](http://ydblogs.com)

Member

