

Everyone Loves to be here



VALLABH

2 & 3 BHK FLATS

SENAPATI BAPAT ROAD

About Group

Deshpande Landmark Pvt. Ltd. is a well-established company dedicatedly working in construction and redevelopment sectors since 2005. Mr. Yogesh A. Deshpande - the founder director of Deshpande Landmark Pvt. Ltd, and is a genuine inspiration of Deshpande Landmark Pvt. Ltd. We, Deshpande Landmark Pvt. Ltd. have the mission to raise the customer's lifestyle by building elegant structures using high quality materials and offering best of amenities. We, Deshpande Landmark Pvt. Ltd., believe in delivering products that always exceed the buyer's expectations. We build intelligent and functionally superior products to promote Holistic Lifestyle to our customer.



100% COMMITMENT

We are committed to producing long-lasting relationships with our clients, and it helps us to repeat business for years.



GROWTH DRIVEN SYSTEM

We believe that collaboration, dedication and commitment establish a sense of trust and transparency.



HIGH QUALITY SERVICE

We have carved out a niche for high-quality outcomes in the civil contracting and construction industry.



CUSTOMER FOCUS

We continuously endeavour to surpass our customer's needs and expectations within budget and on time.



VALLABH

2 & 3 BHK FLATS

SENAPATI BAPAT ROAD

VALLABH

2 & 3 BHK FLATS

SENAPATI BAPAT ROAD

#SMARTHOME



16+

Amenities

Smart Home Automation



Keyless Home Entry



POP Ceiling in Living Room



Designer Bathroom Fitting



CCTV Control



Intercom



Video Door Phone



Attractive Elevator

Secured Premises



24 X 7 Security



Passenger Lift and Stretcher Lift



Security Cabin

Strong Fitness



Outdoor Fitness Zone

Serene Courtyard



Mechanical Parking



Entrance Lobby



Rain Water Harvesting *



Covered Parking



Recreational Open Space at Terrace

Smart Energy



Solar Lighting at Walkway



Solar Water System



Vehicle Charging Point



Solar Connection in Master Bedroom

The above Amenities are subject to plan provision & space availability. T & C apply.

ROOFTOP AMENITIES

This is a reference layout with facilities .
This may change as per availability of space.



खास आकर्षण मराठी वाचनकट्टा

प्रत्येक प्रकल्पांमध्ये दर्जेदार व
अभिजात मराठी साहित्य
असलेल्या ग्रंथसंपदेचे वाचनालय



पु. लं. चे पुणे

2 BHK



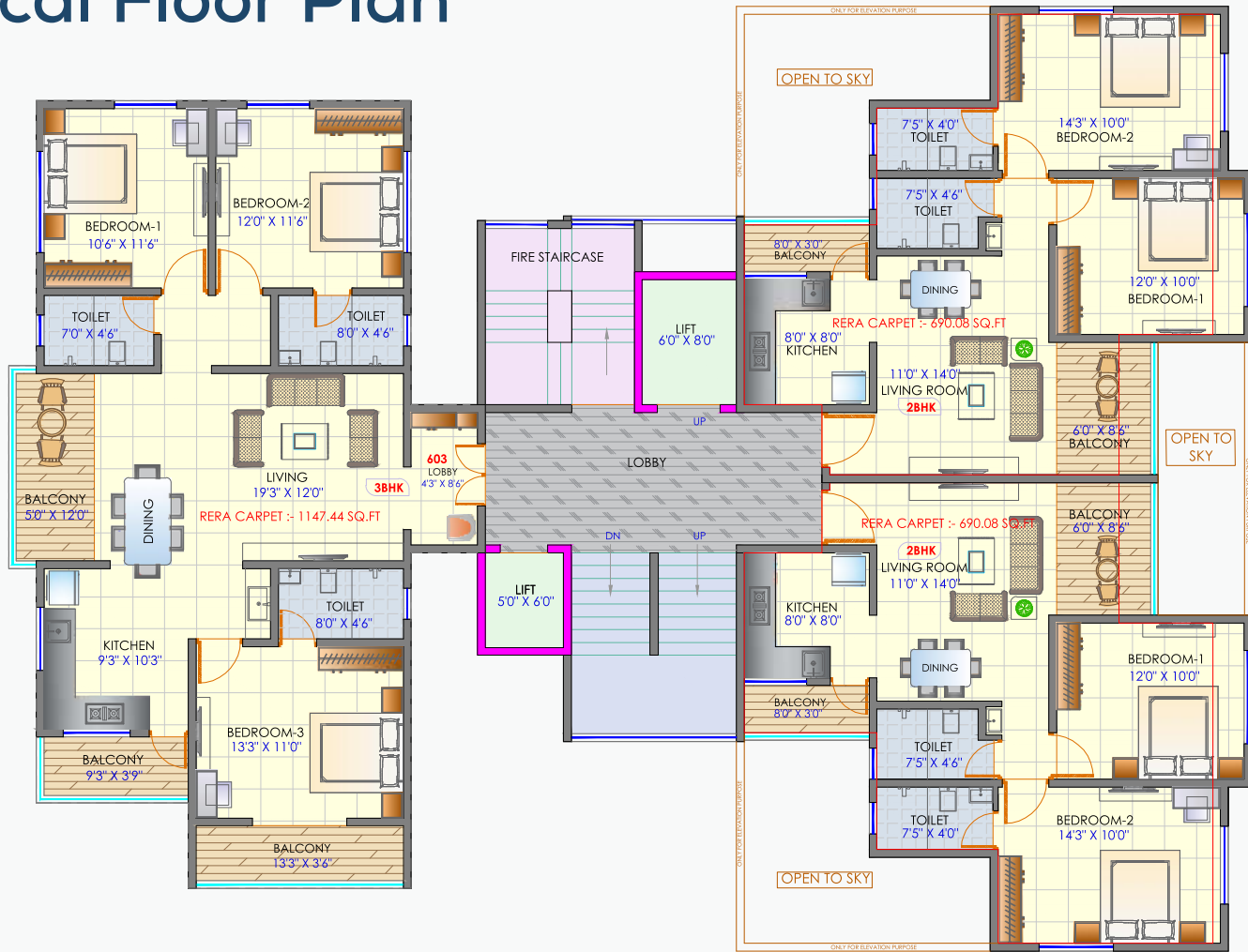
3 BHK



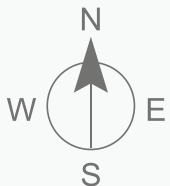
2 & 3 BHK



Typical Floor Plan



9.00 M. WIDE ROAD



AREA STATEMENT			
TYPICAL FLAT	FLAT TYPE	RERA CARPET	SALEABLE
001	2 BHK	690.08 sq.ft	931.61 sq.ft
002	2 BHK	690.08 sq.ft	931.61 sq.ft
003	3 BHK	1147.44 sq.ft	1549.41 sq.ft

Location



ONGOING PROJECTS

- **WISHFUL 60 EXOTICA** - SUS • **CHANDRA** - Mayur Colony
- **KOMAL** - Karve Nagar • **VALLABH** - Senapati Bapat Rd.
- **ANJANEYA** - Dahanukar Colony, Kothrud • **HARIPRASAD** - Patwardhan Baug

रिडेव्हलपमेंटमधील विश्वसनीय नाव



Deshpande Landmark Pvt. Ltd.

Promoters & Developers

Since 2005

'Jaydeep' Building, 5/3 Erandwane, Pune, Maharashtra 411004

+91 82374 53365 / +91 82374 63365

✉ sales@deshpandelandmark.com 🌐 www.deshpandelandmark.com

📘 <https://www.facebook.com/deshpandelandmark>

📷 <https://www.instagram.com/deshpandelandmark>

ydblogs.com

Disclaimer: This brochure is conceptual and not a legal offering. The builder reserves the rights to delete or alter any details and/or make improvements as and when required. The images, layouts and maps in this brochure are for indicative purposes only.

